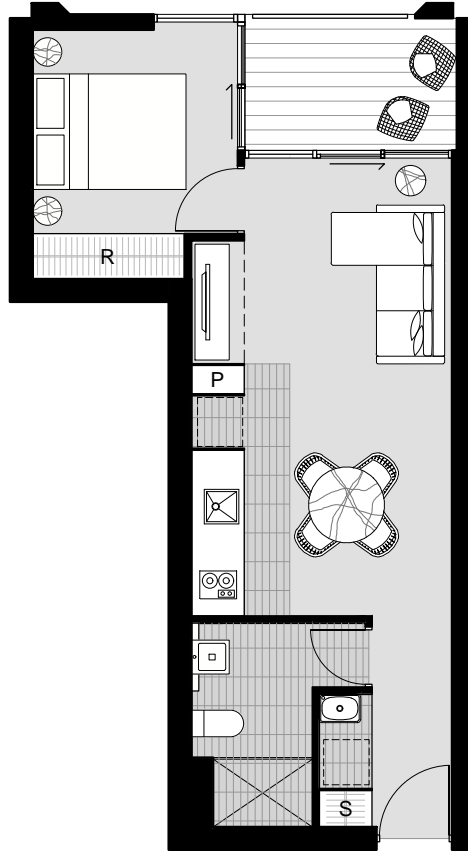


# GOVERNOR PLACE

30 & 32 BLACKALL STREET, BARTON  
APARTMENT TYPE S2



1 BEDROOM  
Living area: 43 m<sup>2</sup>  
Balcony: 5 m<sup>2</sup>

UNIT NUMBERS: 83, 91, 94, 102, 105, 113,  
116, 124, 127, 135



The Doma Group, Morris Property Group, the Sellers and their appointed agent Colliers International do not guarantee, warrant or represent that the information contained in this advertisement and marketing document is correct. Any interested parties should make their own enquiries as to the accuracy of the information. We exclude all inferred or implied terms, conditions and warranties arising out of this document and any liability for the loss or damage arising there from.

The figure stated as 'Living Area' on the plan is for gross floor area and is measured to the outside face of external walls, to the centre line of party and corridor walls and includes structure, riser shafts and vertical service ducts.

The figure stated as 'Balcony Area' or 'Courtyard Area' on the plan is measured to the centre line of the party walls and to the outside surface of external walls



THE DOMA GROUP

